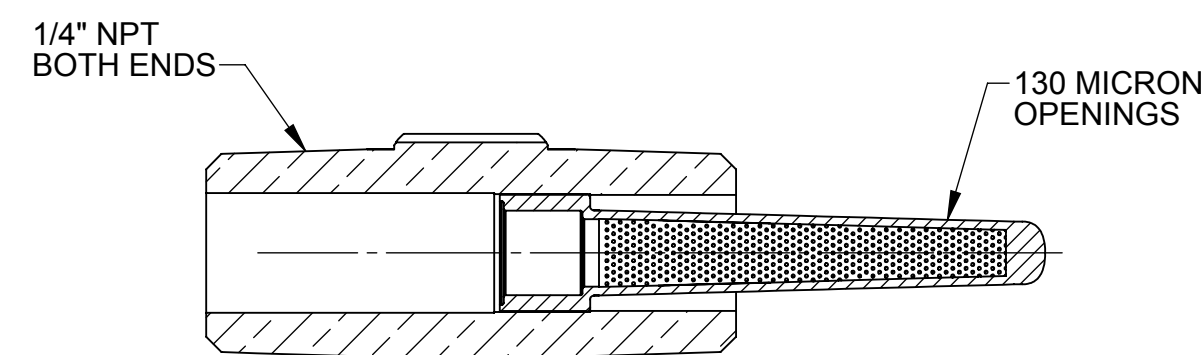
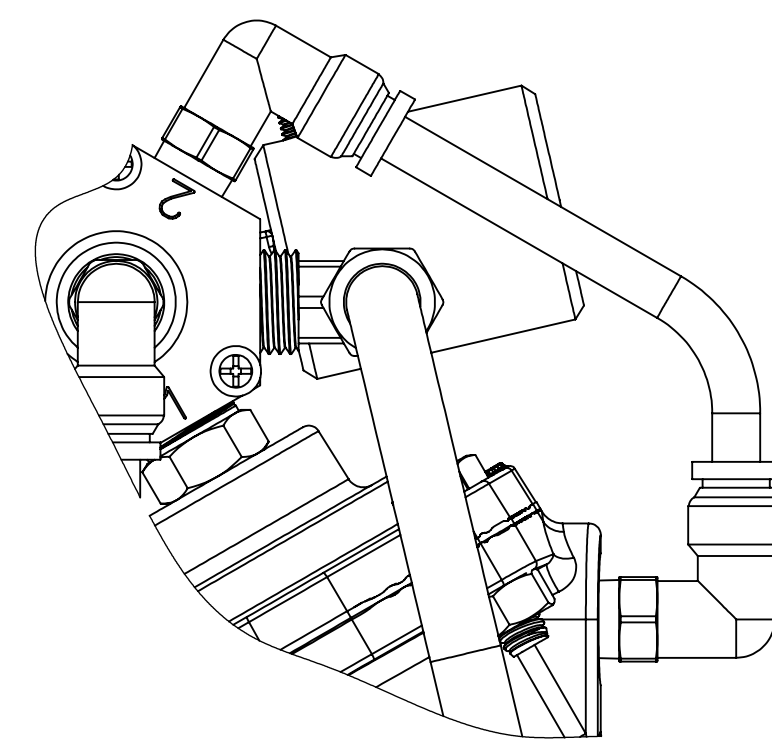


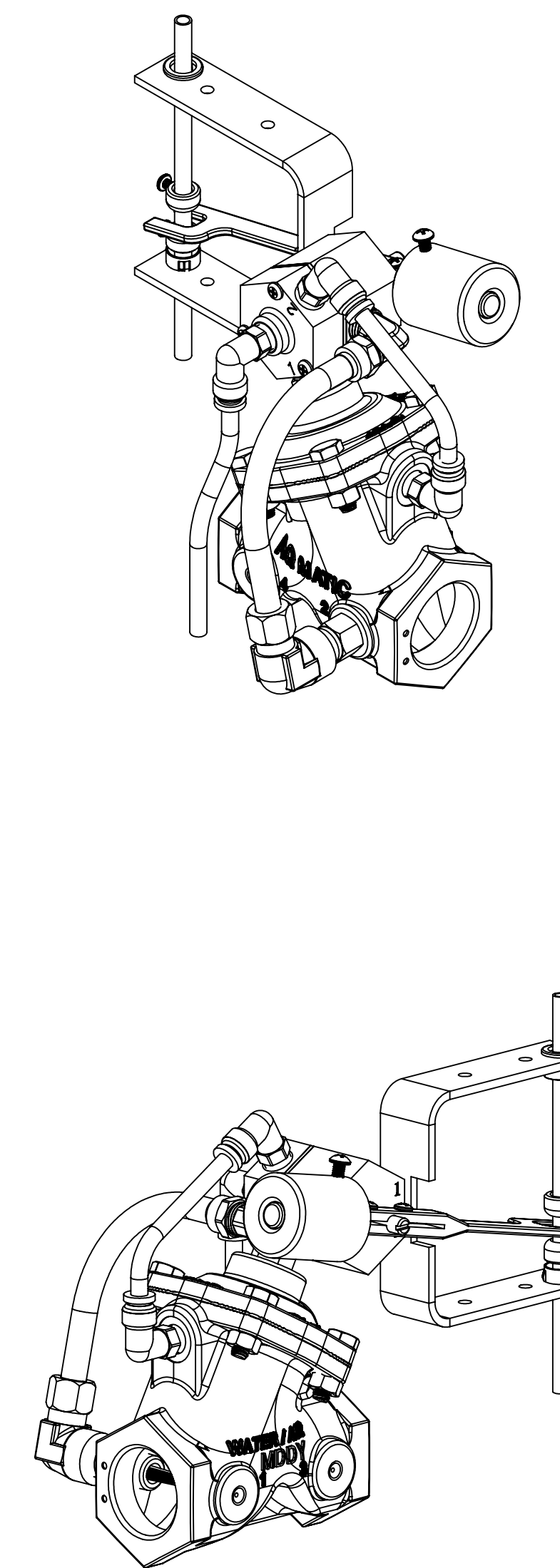
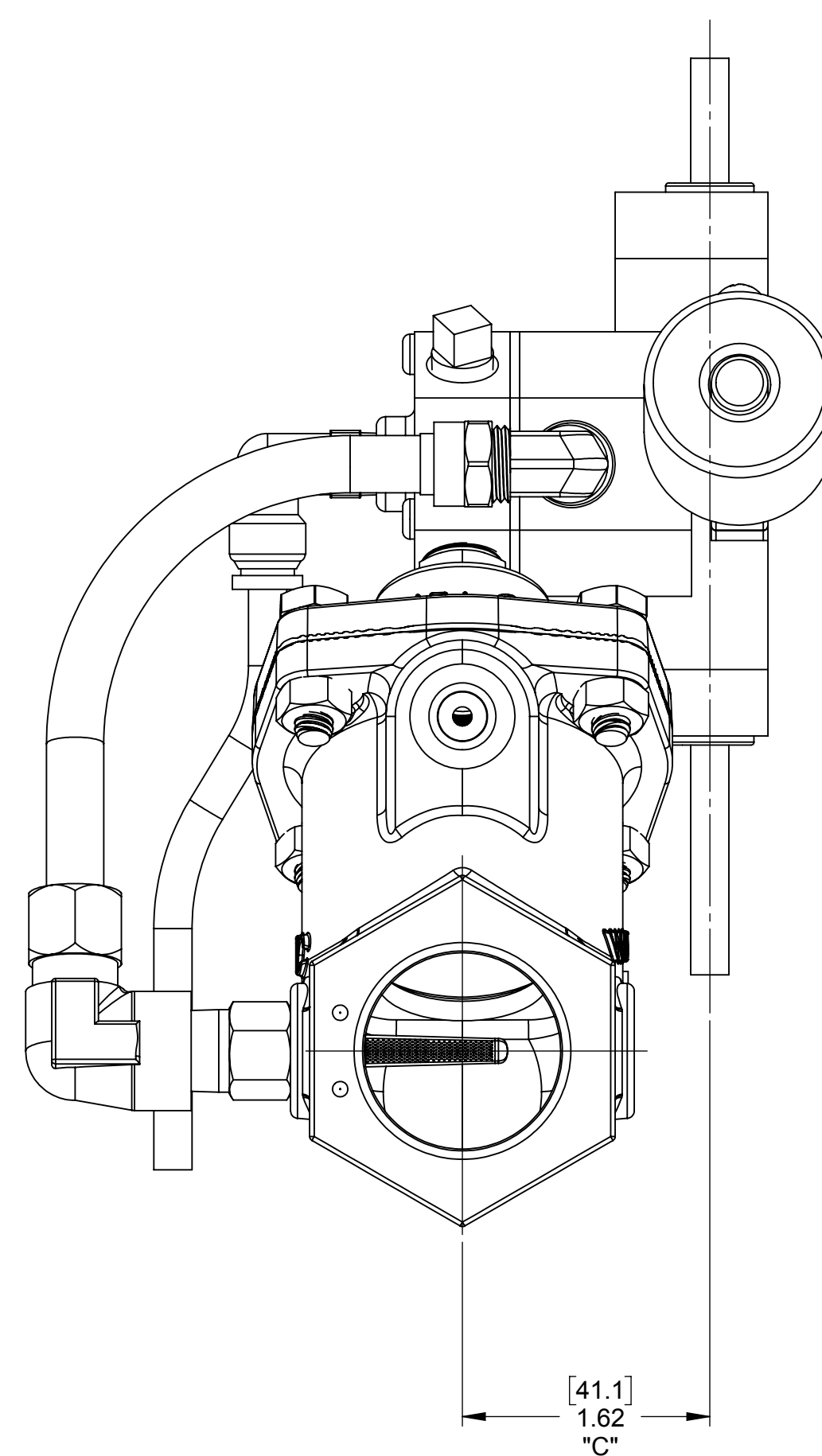
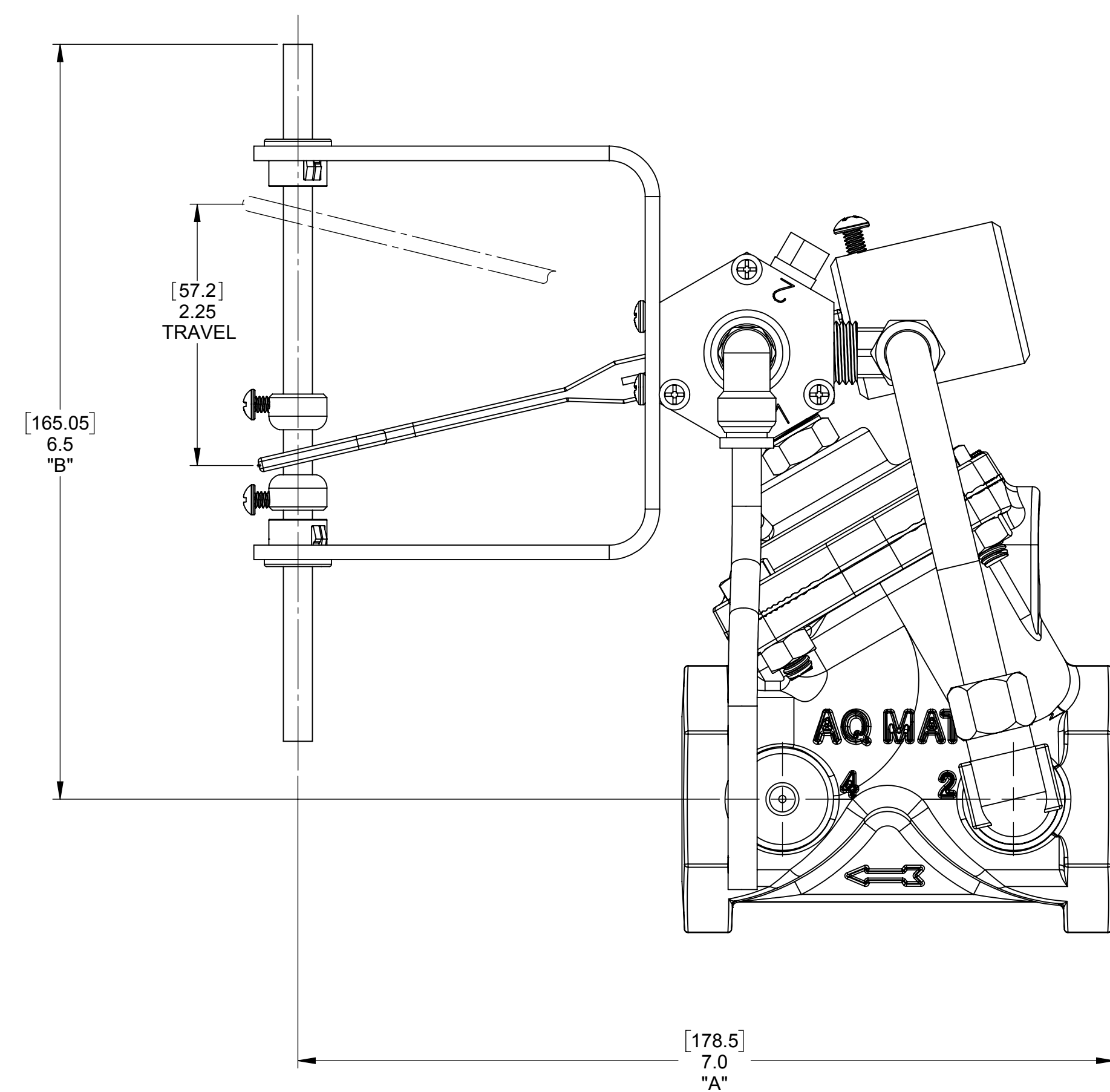
REVISIONS					
ZONE	ECN	REV.	DESCRIPTION	DATE	APP'D
	104648	F	1-UPDATED TITLE BLOCKS, 2-ADD'D: PG-3 & 6 FOR STD FLOAT VERSIONS, 3-ADD'D: 421 SAC VIEW ON PG'S 3 & 4.	22MAY15	TJM
	104648	G	1-IT#14-WAS: 1074001, 2-ROTATED IT#22 180°, 3-IT#14-WAS: 1074001, 4-ADDED SIDE VIEWS, 5-IT#15-WAS: 1074001, 6-IT#18-REMD: 1074002, 7-IT#15-WAS: 1074001, 8-IT#18-REMD: 1074002	19AUG15	TJM
	105334	H	1-WAS: 3029346 NOW: 16566-8, 2-IT# 18 WAS IT# 26, 3-ADD'D: PG-7 (CLOSED IF- LOW)	25NOV15	TJM
	1001	J	AQ Matic update & verified part numbers	20JAN17	MGS
	1372	K	1-UPDATE VALVE BODIES/CAPS, 2-CORRECT ASSEMBLY ISSUES	12/06/18	KJB



**SECTION A-A**  
**SCALE 2 : 1**  
**STRAINER ASSEMBLY**



**POWERED OPEN OPTION**  
FOR DETAILED ASSEMBLY SEE PG'S - 2 & 5



VALVE SERIES	421	424	425	426	427	428
PIPE SIZE	1"	1-1/4", 1-1/2"	2"	2"	3"	4"
A	7.20 182.9	8.29 210.6	9.29 132.1	9.87 236.0	10.80 274.3	12.80 325.1
B	6.50 165.1	7.81 198.4	8.37 212.6	9.56 242.8	10.56 268.2	13.81 350.8
C	1.70 43.2	4.20 106.7	5.20 132.1	5.20 132.1	6.20 157.5	6.20 157.5

**421-428**  
**FLOAT VALVES**  
**ON THIS PAGE**

THIS DOCUMENT IS SOLELY THE PROPERTY OF AQ Matic VALVE & CONTROLS COMPANY INC. REPRODUCTION, USE, DISCLOSURE, OR TRANSMISSION OF THIS DOCUMENT OR DETAILS CONTAINED HEREIN, IN PART OR IN WHOLE, IS PROHIBITED WITHOUT THE WRITTEN CONSENT OF AQ Matic ENGINEERING. THIS DOCUMENT AND ANY COPIES SHALL BE RETURNED TO AQ Matic UPON REQUEST.

COMPONENTS/ASSEMBLIES TO BE COMPLIANT AND COMPATIBLE WITH EUROPEAN UNION DIRECTIVE 2011/65/EU (ROHS2) & REGULATION (EU) 2015/863 (REACH) REQUIREMENTS

THIRD ANGLE PROJECTION

APPROVALS	DATE
DRAWN SM	04/18/11
APPROVED	
CHECKED	

DO NOT SCALE DRAWING DIMS ARE IN INCHES (mm)  
INTERPRET DIMS AND TOLERANCES PER ASME Y14.5M-2009  
UNLESS OTHERWISE SPECIFIED:  
ALL FINISHED MACHINED SURFACES 125 / OR BETTER.  
TOLERANCES:  
ANGLES : 1°  
1 PLACE .X ± .015 (0.38)  
2 PLACE .XX ± .01 (0.3)  
3 PLACE .XXX ± .005 (0.13)

TITLE  
CATALOG SHEET, 420 DAIPHAGM  
FLOAT OPERATED VALVES

SIZE B DWG NO. 1078190 REV K

SCALE 1:1 SHEET 1 OF 7

Buy AQ Matic.com







REVISIONS					
ZONE	ECN	REV.	DESCRIPTION	DATE	APPD
			SEE SHEET ONE FOR NOTES		

ITEM NO.	DESCRIPTION	PART NUMBER	QTY. (421)
1	PILOT CNTL ASSY, 348, -AE	1073992	1
2	BRACKET, 348	1074012	1
3	RD. HD. MACH. SCREW, (6-32 X 1/4)	1072370	2
4	COUNTERWEIGHT, STD	1074014	1
5	CENTERING COLLAR, BRASS	1074017	2
6	LEVER, 348	1074034	1
7	BUSHING	1074016	2
8	FLOAT ROD	1074023	1
9	STUD, THRD, #12-24 UNC-2A, BRASS	1074025	1
10	GREASE, LUBRIPLATE, FGL-2	16856-8	1
11	FLOAT, SAND, 5"	1073996	1
12	RD. HD. MACH SCREW, (8-32 X 1/2)	1072375	1
13	STRAINER	1074002	1
14	STRAINER ASSY	1074004	1
15	SPACER, BRASS	1074127	1
16	SCREW, PHLP, PN HD	1072371	4
17	FITTING, ELBOW, BRASS	1074037	1
18	PLUG, PIPE	1071903	1
19	FITTING, INSERT, 3/8	10332	1
20	TUBING, POLY 1/4" O.D. X .035	1071936	1
21	FITTING, TUBE, .37 OD	1071940	1
22	FITTING, NIPPLE, 1/4X1/8 REDUCR	1074038	1
23	FITTING, ELBOW, TUBE, 1/8MNPT X	1078765	1
24	FITTING, ELBOW, TUBE 1/4FNPTX3/	1074007	1

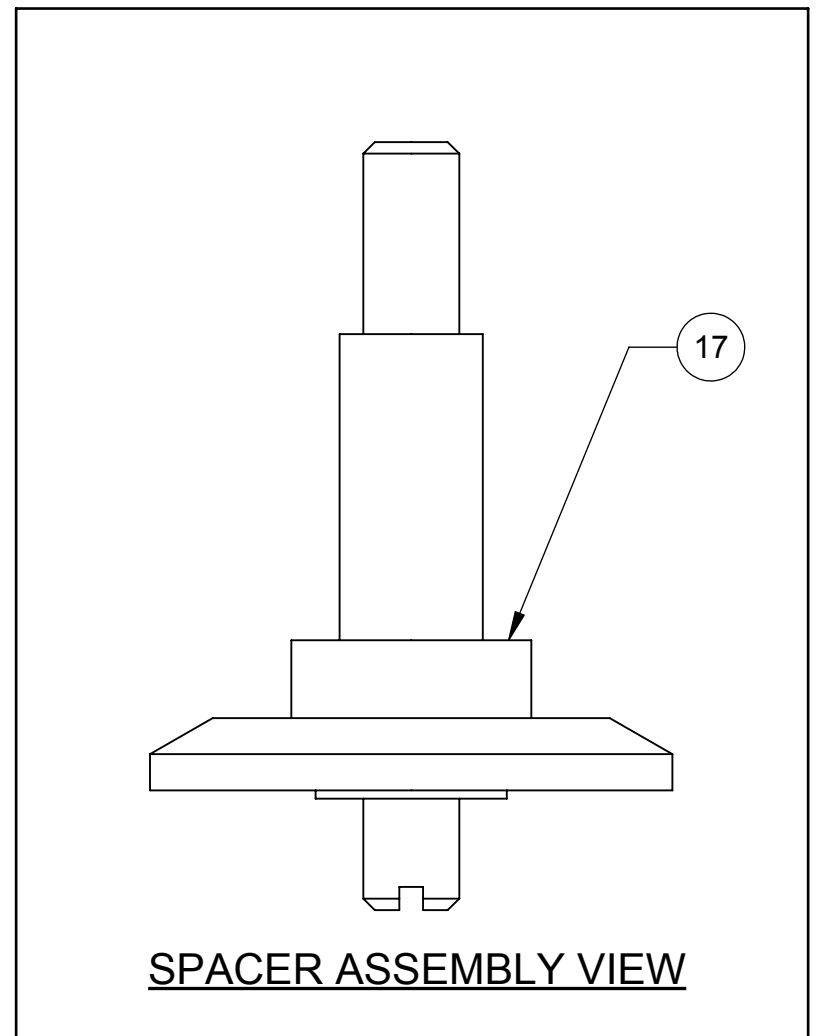
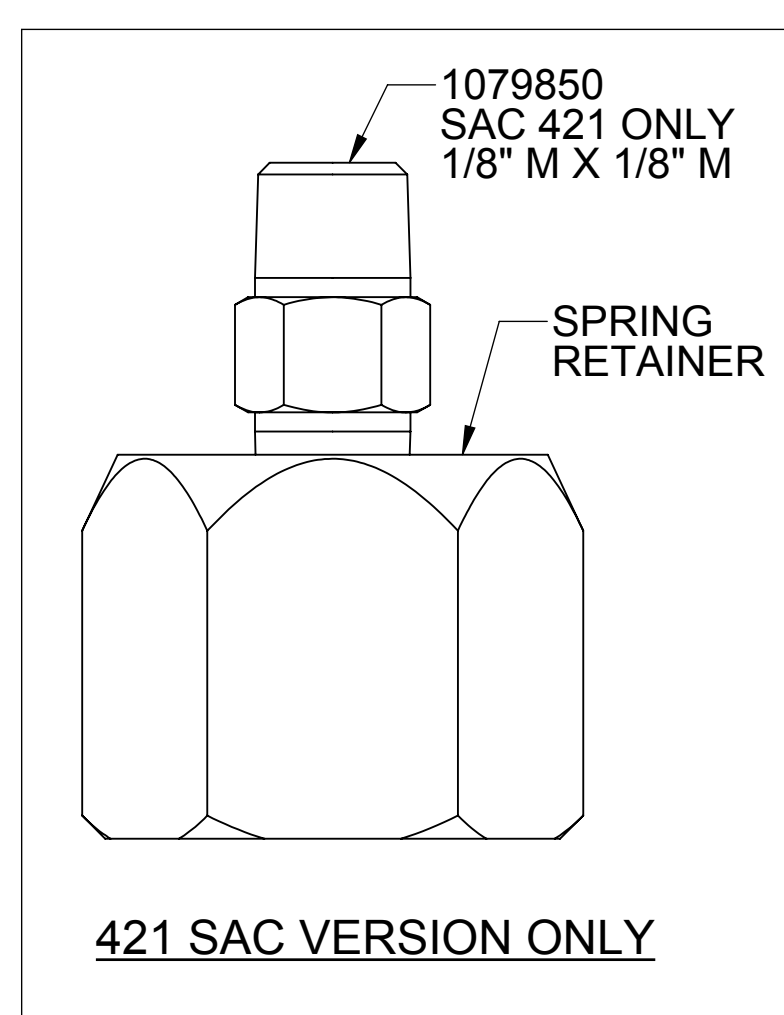
NOT ACTUAL LENGTH FOR ASSM REPRESENTATION ONLY.

SEE NOTE-2

PAINT OPTIONS	
PART #	COLOR
42805	RED
43198	BLUE
42807	BLACK
42808	ASH

NOTES:

1. DRILL AND TAP PORT #2 WITH 1/4" NPT. [421 VALVE]
2. SEE DRAWING 1078193 FOR ROD LENGTH/MATERIAL OPTIONS.
3. 421 MODEL IS SHOWN ON THIS DRAWING SHEET. SEE SHEET 4, 5, & 6 FOR 424-428 MODELS.
4. STANDARD 421 MODEL SHOWN.



COMPONENTS / ASSEMBLIES TO BE COMPLIANT AND COMPATIBLE WITH EUROPEAN UNION DIRECTIVE 2011/65/EC (RoHS) & REGULATION (EU) 2017/2456 (REACH) REQUIREMENTS

THIS DOCUMENT IS SOLELY THE PROPERTY OF AQ Matic VALVE & CONTROLS COMPANY INC. REPRODUCTION, USE, DISCLOSURE, OR TRANSMISSION OF THIS DOCUMENT OR DETAILS CONTAINED HEREIN, IN PART OR IN WHOLE, IS PROHIBITED WITHOUT THE WRITTEN CONSENT OF AQ Matic ENGINEERING. THIS DOCUMENT AND ANY COPIES SHALL BE RETURNED TO AQ Matic UPON REQUEST.

DO NOT SCALE DRAWING DIMS ARE IN INCHES (mm) UNLESS OTHERWISE SPECIFIED. ALL FINISHED MACHINED SURFACES 125 / OR BETTER. TOLERANCES: ANGLES: ± 1° 1 PLACE .X = ± 0.15 (0.38) 2 PLACE .XX = ± 0.1 (0.3) 3 PLACE .XXX = ± 0.05 (0.13)

THIRD ANGLE PROJECTION	APPROVALS	DATE
	SM	04/18/11
	APPROVED	
	CHECKED	

TITLE: CATALOG SHEET, 420 DAIPHAGM FLOAT OPERATED VALVES

SIZE: B DWG NO.: 1078190 REV: K

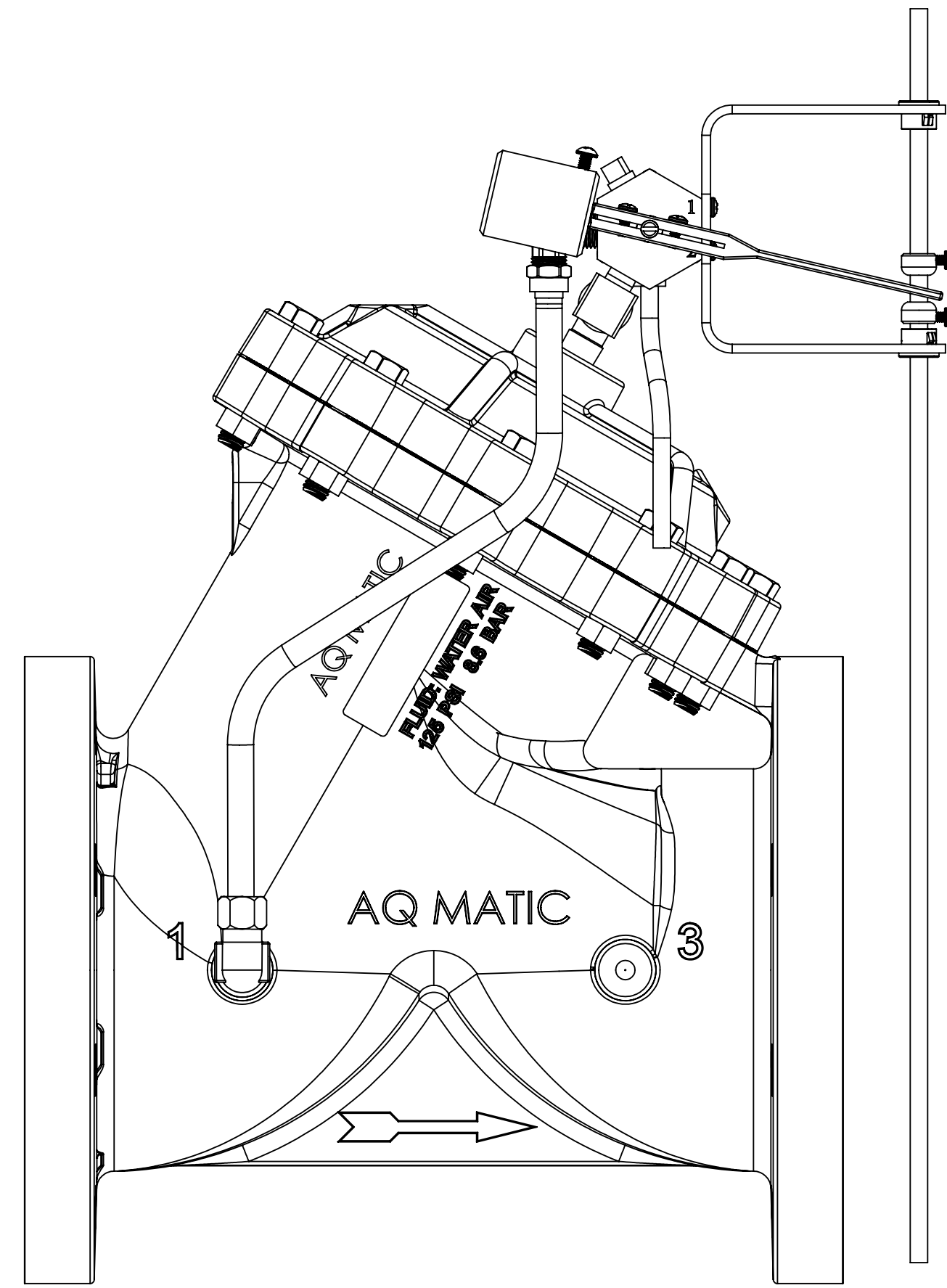
SCALE: 1:1 SHEET 3 OF 7

STANDARD VERSION  
421 FLOAT VALVES  
ONLY ON THIS PAGE

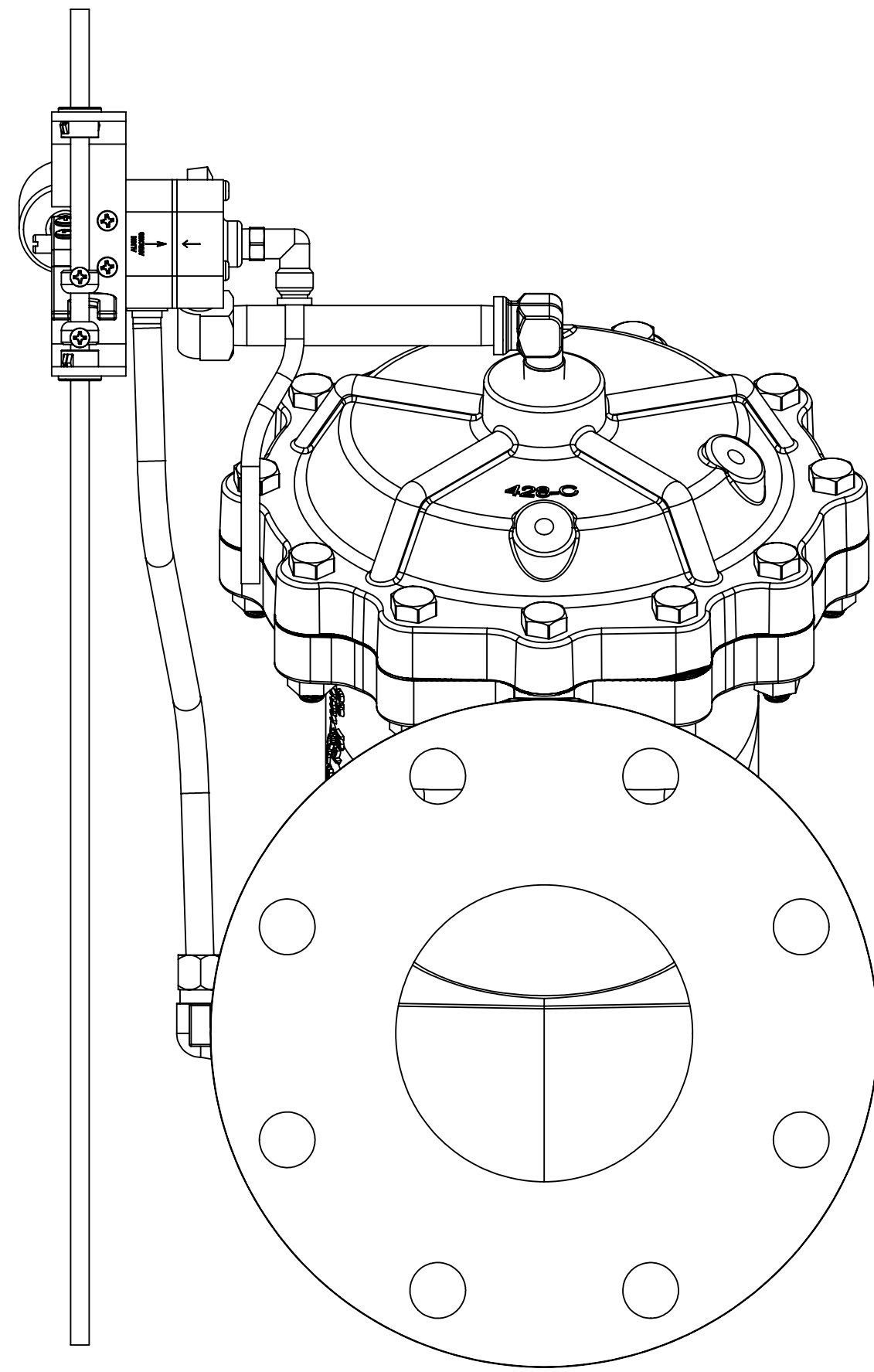
Buy AQ Matic.com



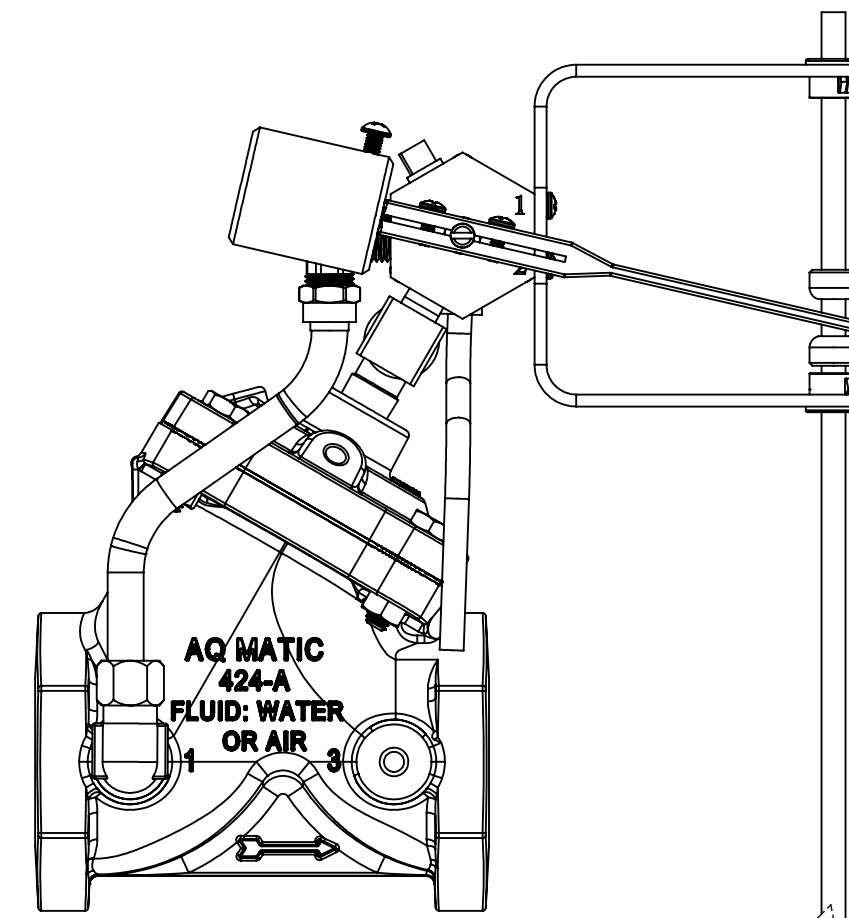
REVISIONS					
ZONE	ECN	REV.	DESCRIPTION	DATE	APPD
			SEE SHEET ONE FOR NOTES		



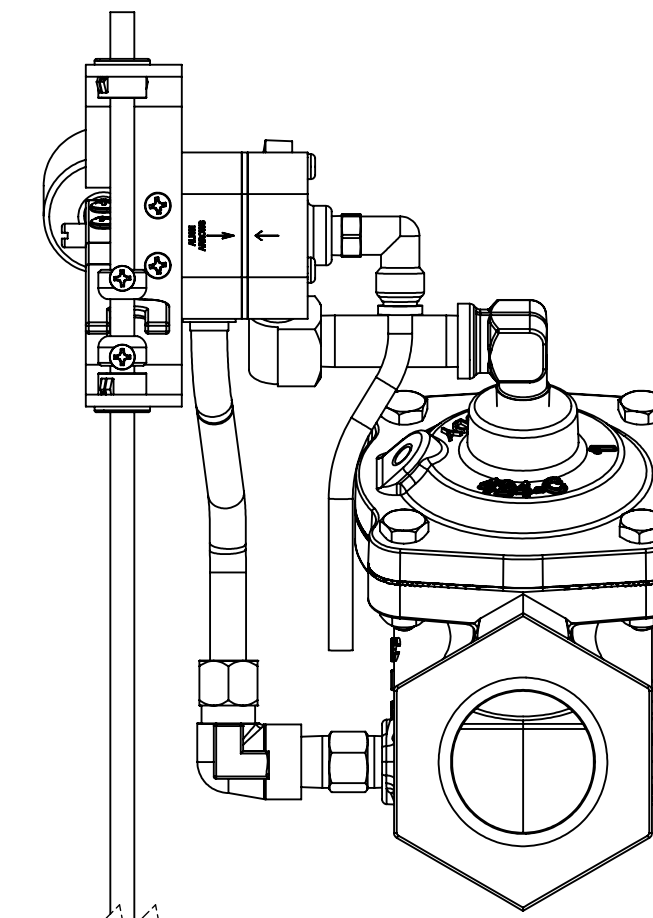
**BR1078190-428**



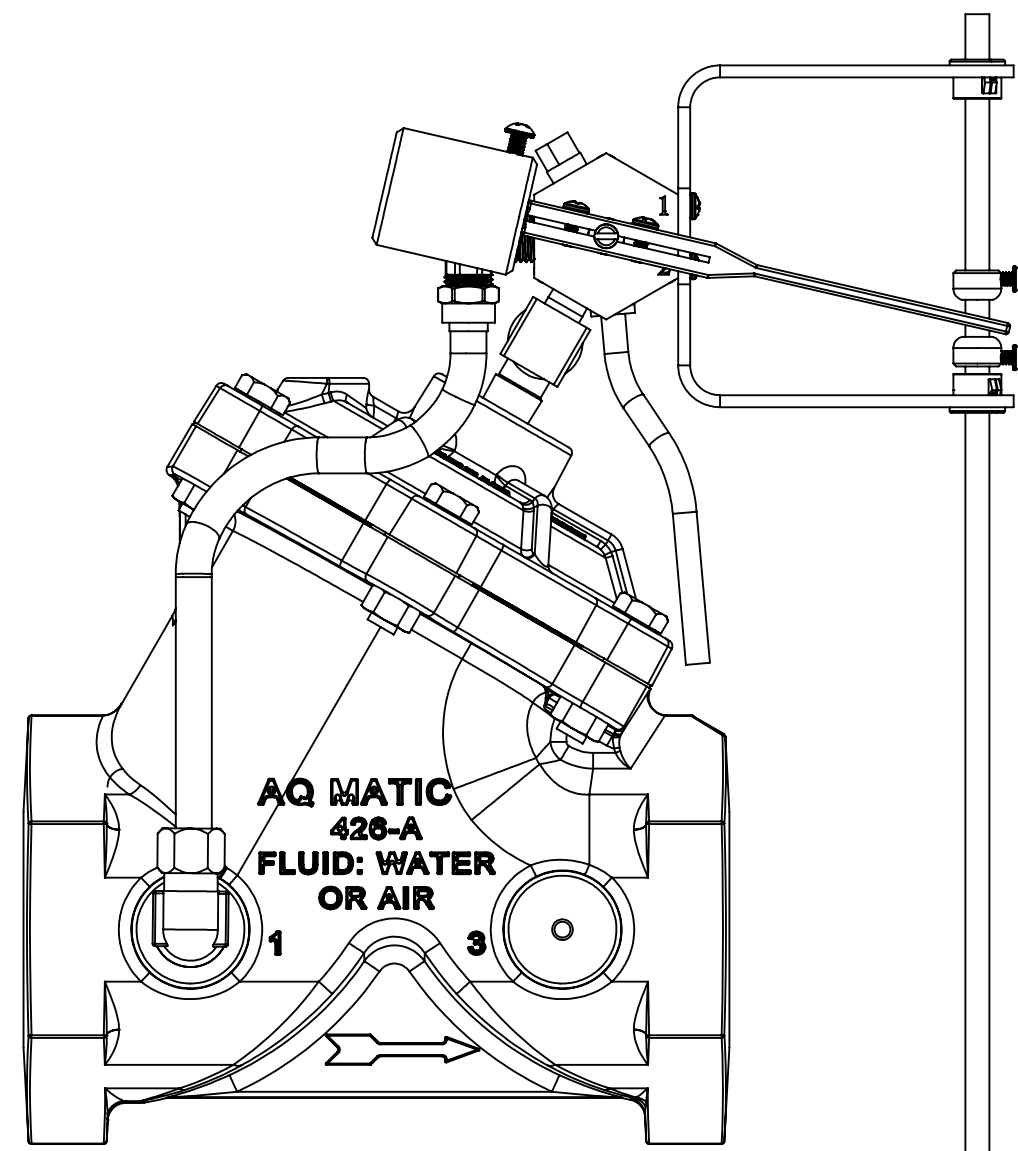
**BR1078190-427**



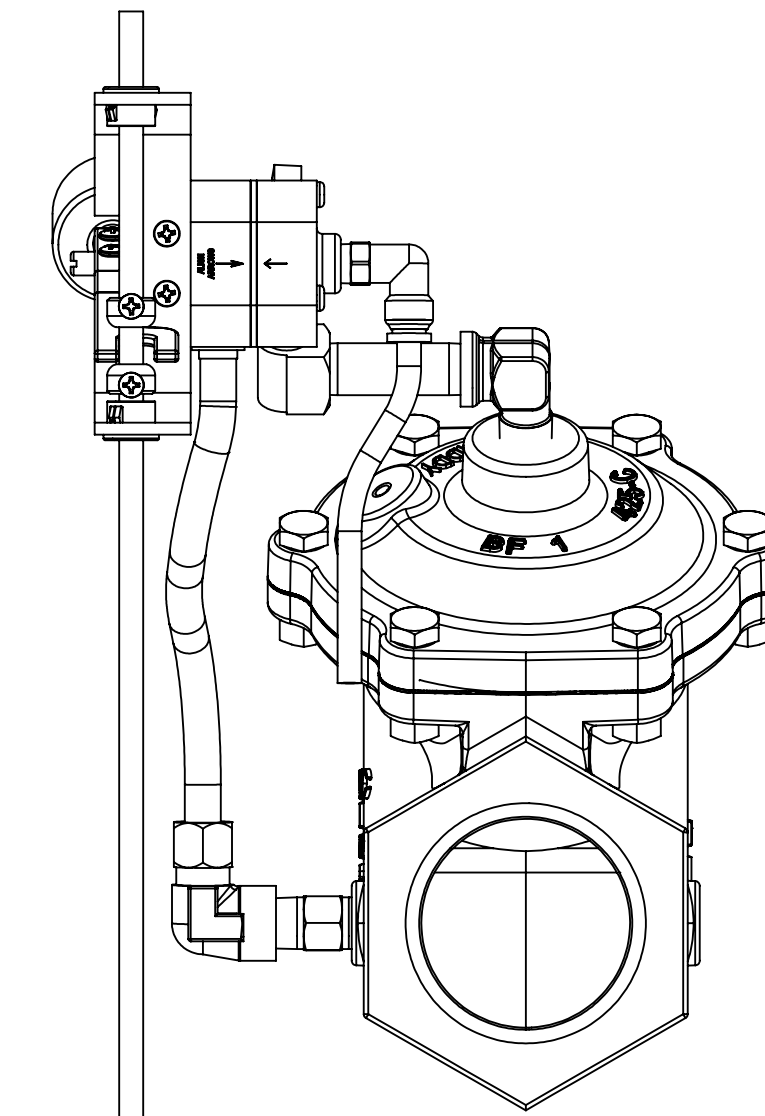
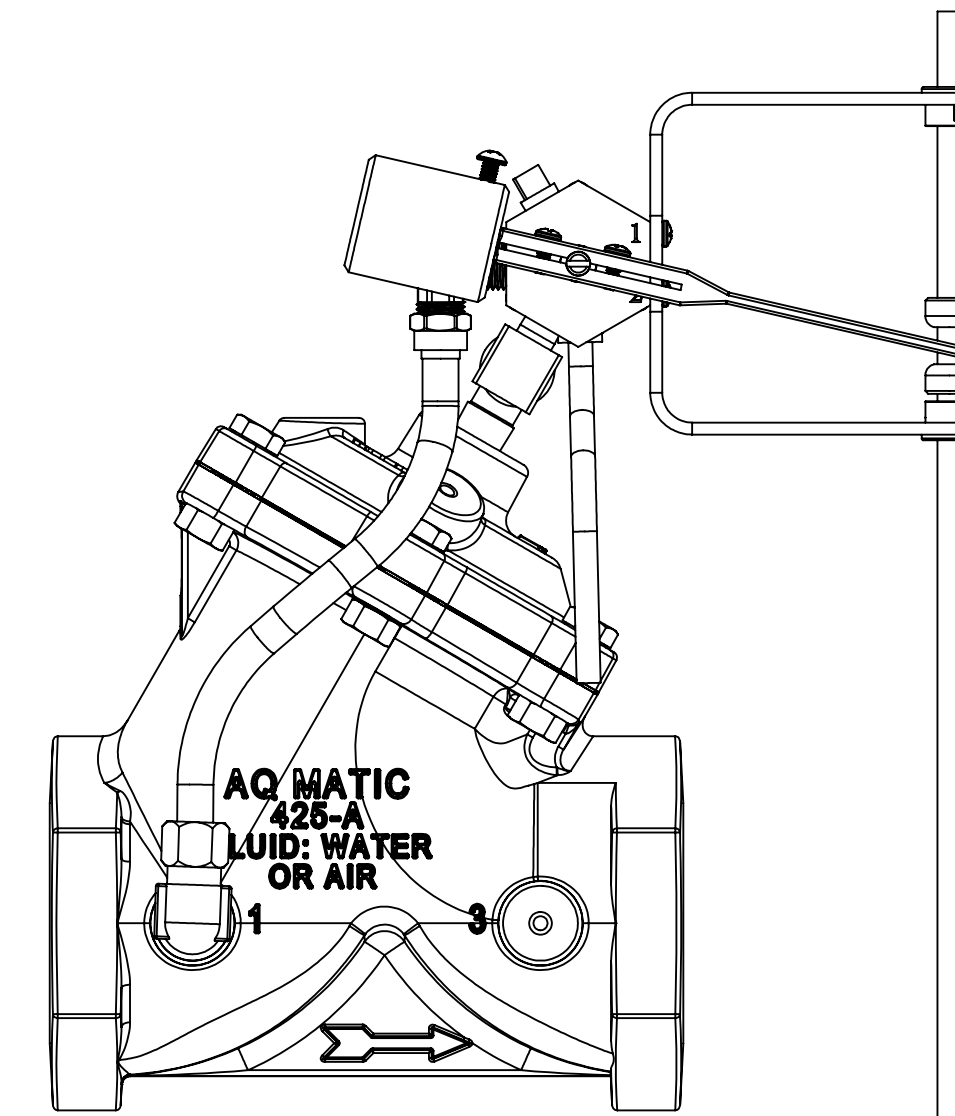
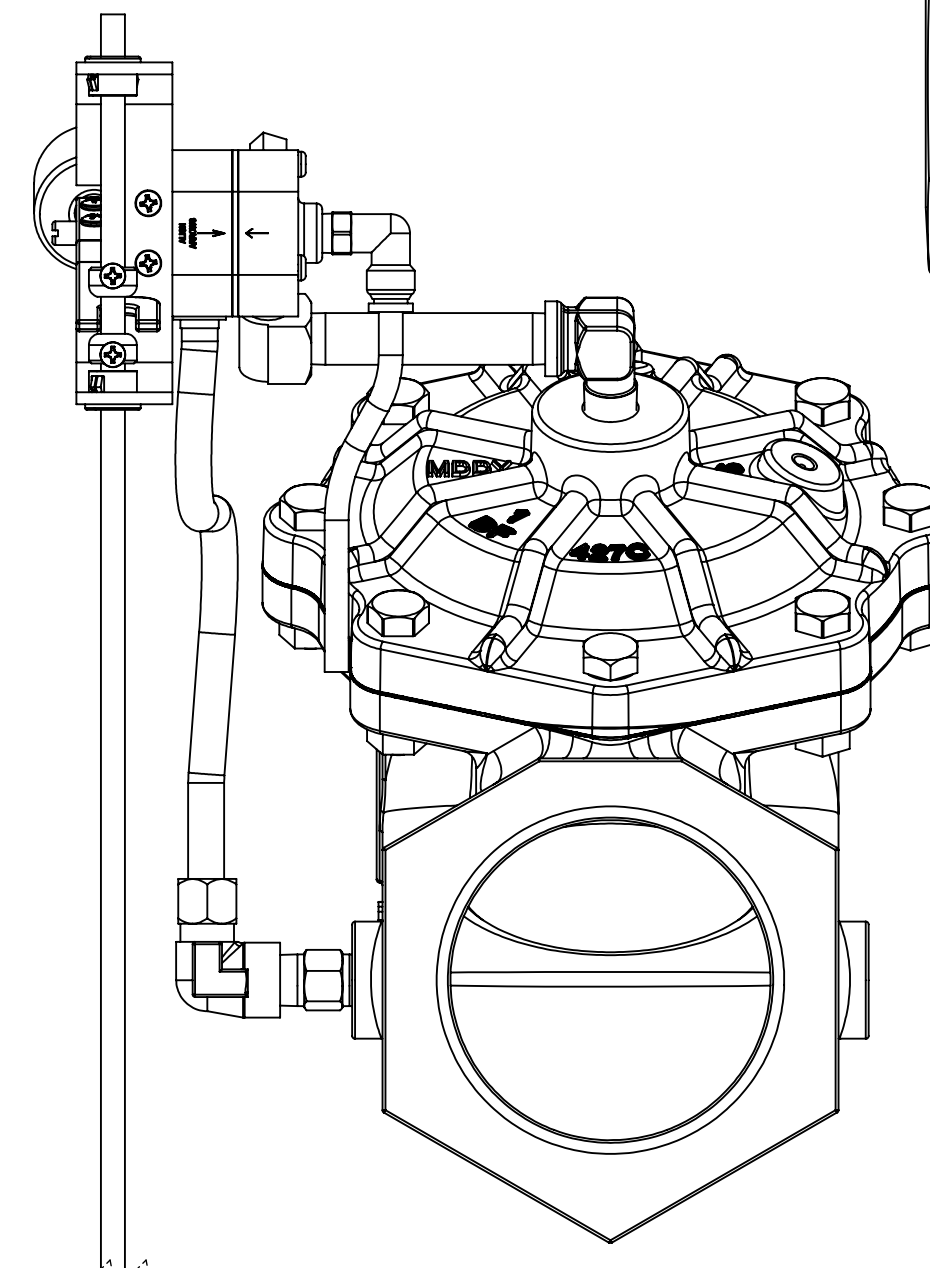
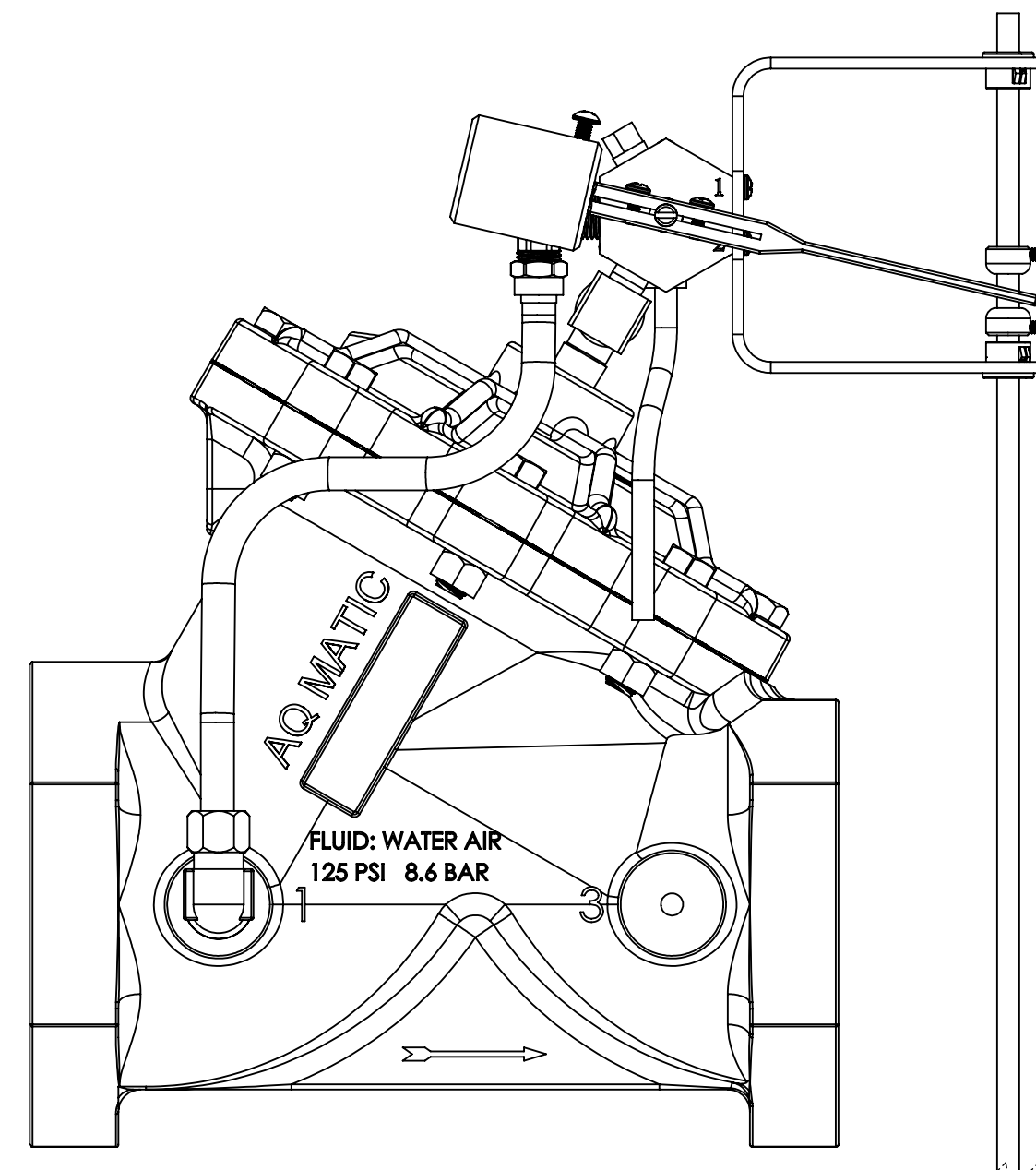
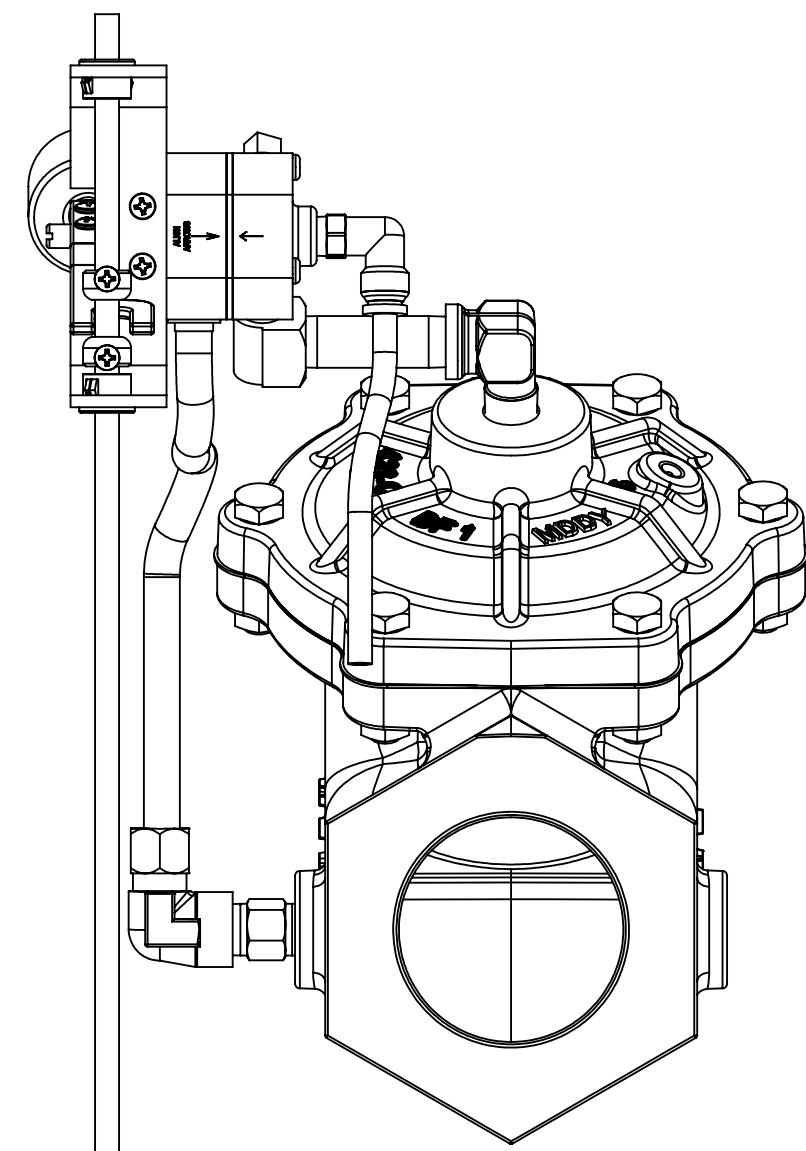
**BR1078190-424**



**BR1078190-425**

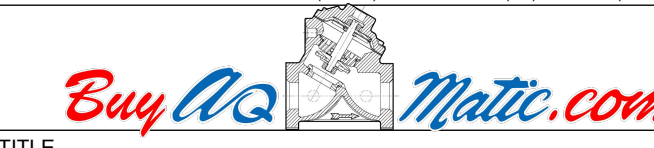


**BR1078190-426**



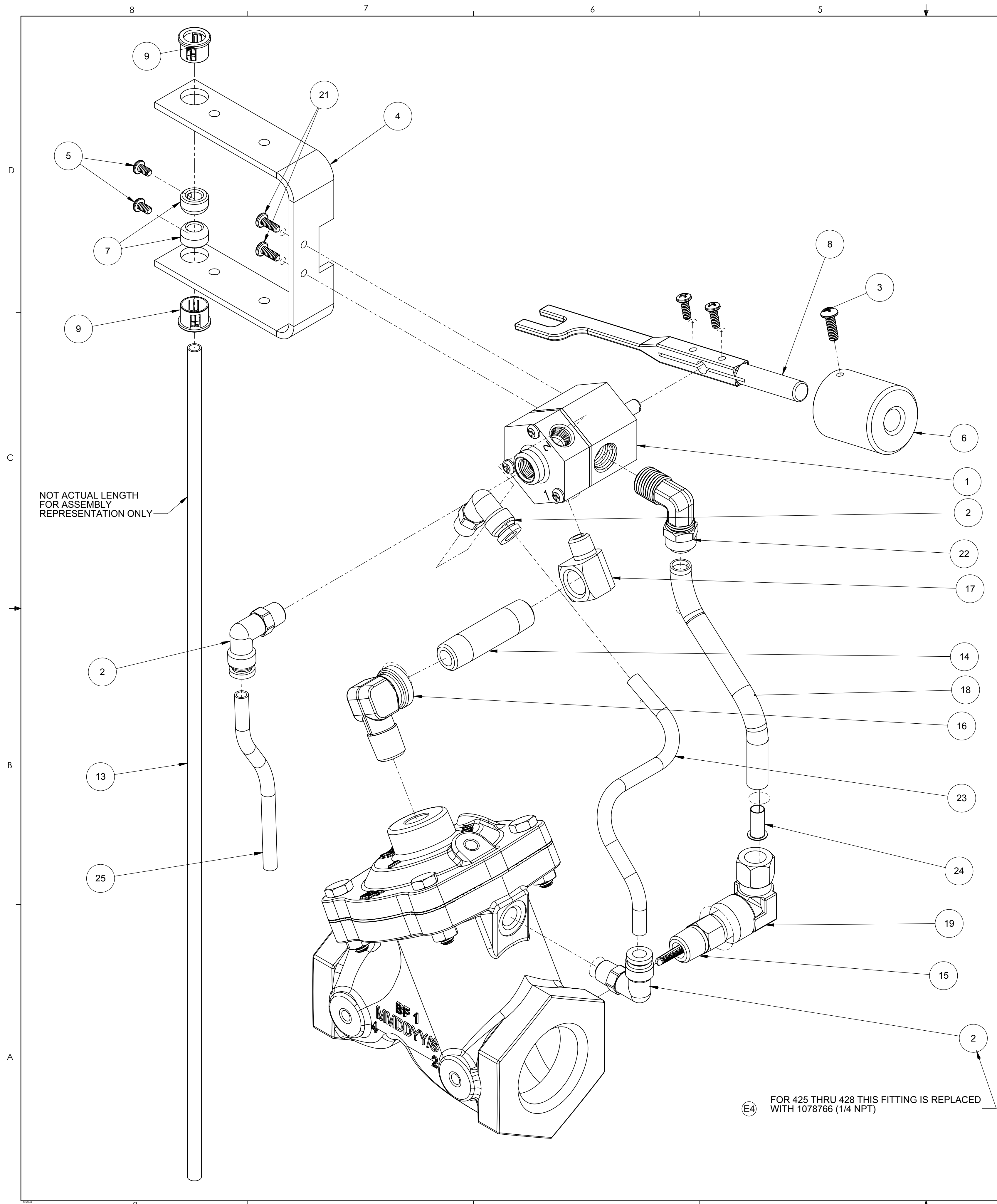
**424 - 428 STANDARD VERSIONS SHOWN**

<small>THIS DOCUMENT IS SOLELY THE PROPERTY OF AQ Matic VALVE &amp; CONTROLS COMPANY INC. REPRODUCTION, USE, DISCLOSURE, OR TRANSMISSION OF THIS DOCUMENT OR DETAILS CONTAINED HEREIN, IN PART OR IN WHOLE, IS PROHIBITED WITHOUT THE WRITTEN CONSENT OF AQ Matic ENGINEERING. THIS DOCUMENT AND ANY COPIES SHALL BE RETURNED TO AQ Matic UPON REQUEST.</small>		<small>COMPONENTS/ASSEMBLIES TO BE COMPLIANT AND COMPATIBLE WITH EUROPEAN UNION DIRECTIVE 2011/65/EU (ROHS2) &amp; REGULATION (EC) 1907/2006 (REACH) REQUIREMENTS</small>	
<small>DO NOT SCALE DRAWING DIMS ARE IN INCHES (mm) INTERPRET DIMS AND TOLERANCES PER ASME Y14.5M-2009 UNLESS OTHERWISE SPECIFIED. ALL FINISHED MACHINED SURFACES 125 √ OR BETTER. TOLERANCES: ANGLES ± 1° 1 PLACE X ± 0.15 (0.38) 2 PLACE XX ± 0.1 (0.3) 3 PLACE XXX ± 0.05 (0.13)</small>	<small>THIRD ANGLE PROJECTION</small>	<small>APPROVALS</small>	<small>DATE</small>
<small>DRAWN</small> SM	<small>APPROVED</small>	<small>DATE</small> 04/18/11	<small>TITLE</small>
<small>CHECKED</small>	<small>SCALE</small> 1:1	<small>SIZE</small> B	<small>DWG NO.</small> 1078190
			<small>REV</small> K
			<small>SHEET 4 OF 7</small>



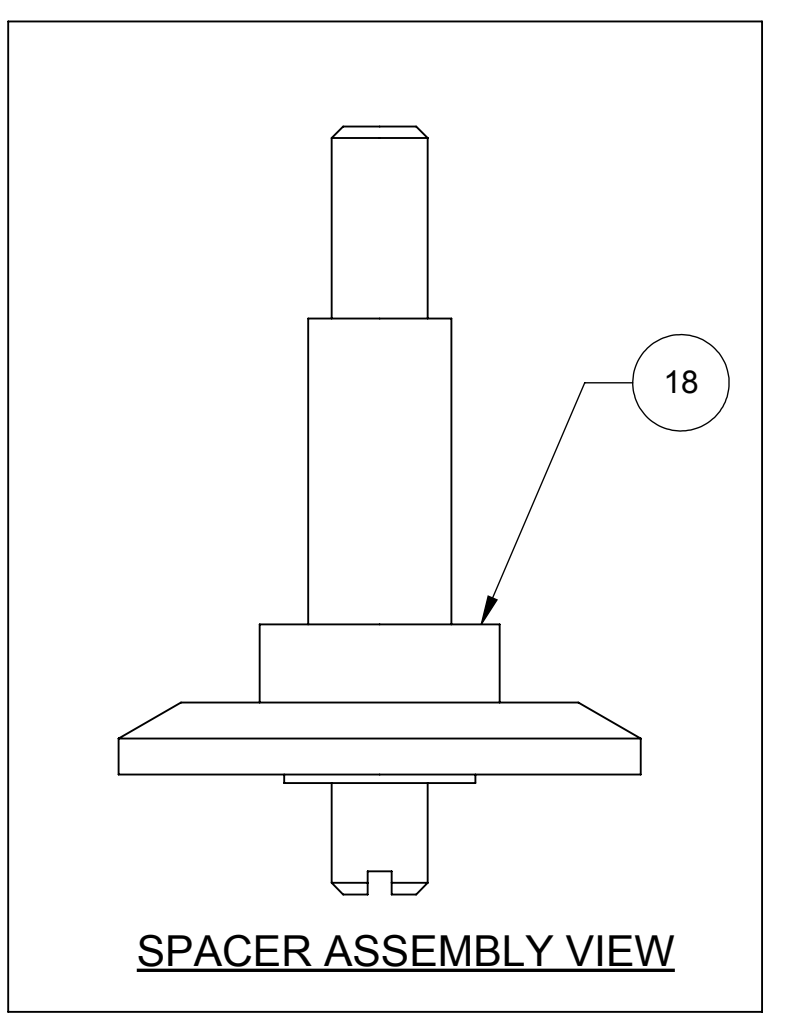
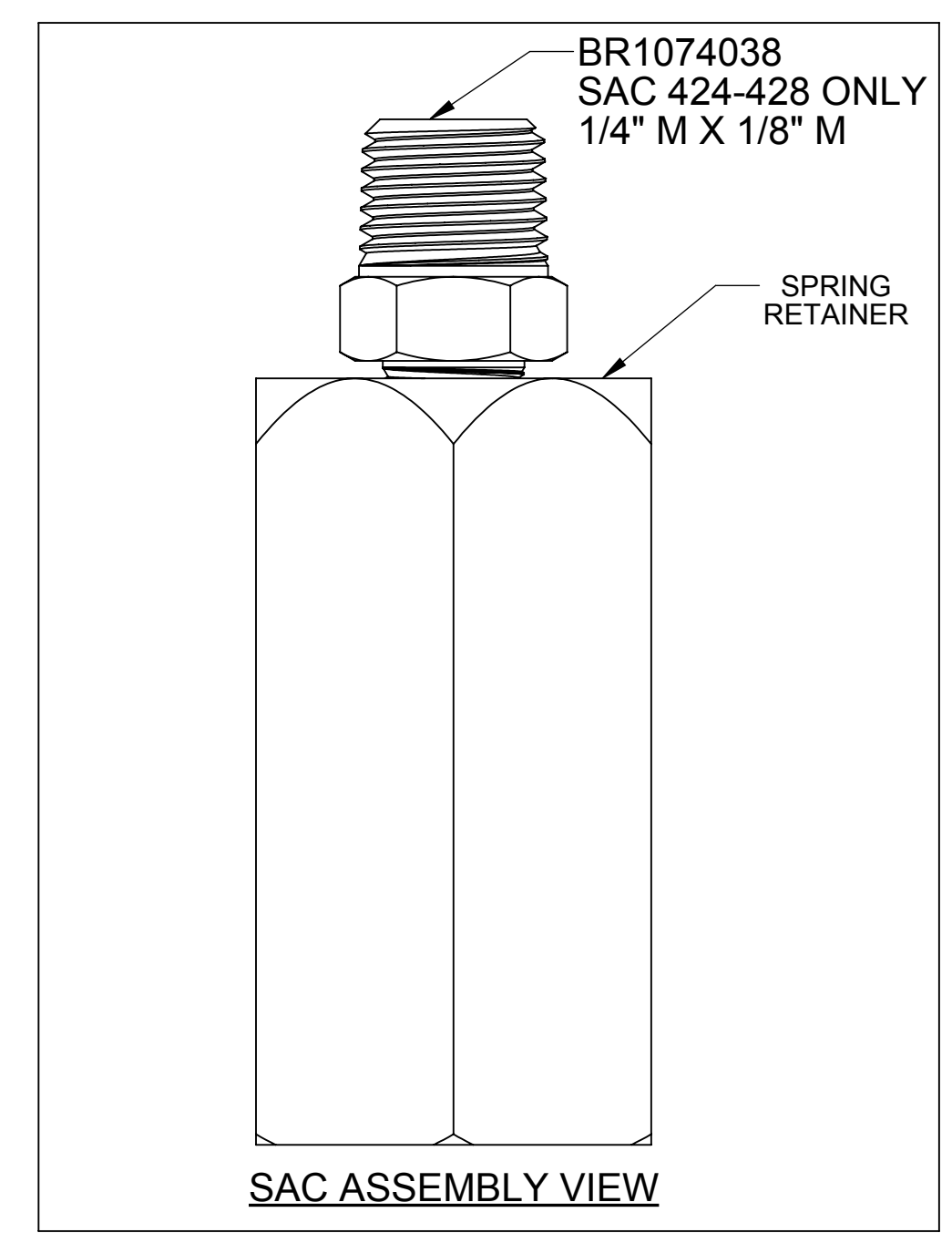
CATALOG SHEET, 420 DAIPHAGM FLOAT OPERATED VALVES





NOT ACTUAL LENGTH FOR ASSEMBLY REPRESENTATION ONLY

E4 FOR 425 THRU 428 THIS FITTING IS REPLACED WITH 1078766 (1/4 NPT)



REVISIONS					
ZONE	ECN	REV.	DESCRIPTION	DATE	APP'D
			SEE SHEET ONE FOR NOTES		

ITEM NO.	DESCRIPTION	PART NUMBER	QTY. (424-428)	POWERED OPEN
1	PILOT CNTL ASSY, 348, -AE	1073992	1	
2	FITTING, ELBOW, TUBE, 1/8MNPT X	1078765	3	
3	RD. HD. MACH SCREW, (8-32 X 1/2)	1072375	1	
4	BRACKET, 348,	1074012	1	
	CENTERING COLLAR, BRASS	1074017	2	
5	RD. HD. MACH. SCREW, (6-32 X 1/4)	1072370	2	
6	COUNTERWEIGHT, STD	1074014	1	
8	LEVER, 348	1074034	1	
9	BUSHING,	1074016	2	
10	STUD, THRD, #12-24 UNC-2A, BRASS	1074025	1	
11	GREASE, LUBRIPLATE, FGL-2	16856-8	1	
12	FLOAT, SAND, 5"	1073996	1	
13	FLOAT ROD,	1074023	1	
	FITTING, NIPPLE 1/4NPTX2, BRASS	424	1071905	
14	PIPE NIPPLE 1/4" X 3"	425, 426	1071906	1
	PIPE NIPPLE 1/4" X 4"	427, 428	1071907	
15	STRAINER ASSY	1074004	1	
16	FITTING, ELBOW, 1/4 MNPT X 1/4F	1074041	1	
17	FITTING, ELBOW, REDUCER, BRS	1074040	1	
18	STRAINER,	BR1074002	1	
19	FITTING, ELBOW, TUBE 1/4FNPTX3/	1074007	1	
		424	1074230	
		425	1074305	
20	SPACER, BRASS	426	1074385	1
		427	1074484	
		428	1074565	
21	SCREW, PHLP, PN HD	1072371	4	
22	FITTING, ELBOW, BRASS	1074037	1	
23	TUBING, POLY 1/4" O.D. X .035	1071936	1	
24	FITTING, INSERT, 3/8	10332	1	
25	TUBING, POLY 1/4" O.D. X .035	1071936	1	

SEE NOTE-2

PAINT OPTIONS	
PART #	COLOR
42805	RED
43198	BLUE
42807	BLACK
42808	ASH

- NOTES:
1. DRILL AND TAP PORT #1 WITH 1/4" NPT. [424-428 VALVES]
  2. SEE DRAWING 1078193 FOR ROD LENGTH / MATERIAL OPTIONS.
  3. POWERED OPEN 424 MODEL SHOWN.

POWERED OPEN VERSION  
FOR 424 THRU 428  
VALVES W/FLOAT

COMPONENTS / ASSEMBLIES TO BE COMPLIANT AND COMPATIBLE WITH EUROPEAN UNION DIRECTIVE 2011/65/EC (RoHS) & REGULATION (EC) 1907/2006 (REACH) REQUIREMENTS

THIS DOCUMENT IS SOLELY THE PROPERTY OF AQ Matic VALVE & CONTROLS COMPANY INC. REPRODUCTION, USE, DISCLOSURE, OR TRANSMISSION OF THIS DOCUMENT OR DETAILS CONTAINED HEREIN, IN PART OR IN WHOLE, IS PROHIBITED WITHOUT THE WRITTEN CONSENT OF AQ Matic ENGINEERING. THIS DOCUMENT AND ANY COPIES SHALL BE RETURNED TO AQ Matic UPON REQUEST.

DO NOT SCALE DRAWING DIMS ARE IN INCHES (mm) UNLESS OTHERWISE SPECIFIED. INTERPRET DIMS AND TOLERANCES PER ASME Y14.5M-2009 UNLESS OTHERWISE SPECIFIED. ALL FINISHED MACHINED SURFACES 125 / OR BETTER. TOLERANCES:  
ANGLES: ± 1°  
1 PLACE .X ± .015 (0.38)  
2 PLACE .XX ± .01 (0.3)  
3 PLACE .XXX ± .005 (0.13)

THIRD ANGLE PROJECTION	APPROVALS	DATE
	SM	04/18/11
	APPROVED	
	CHECKED	

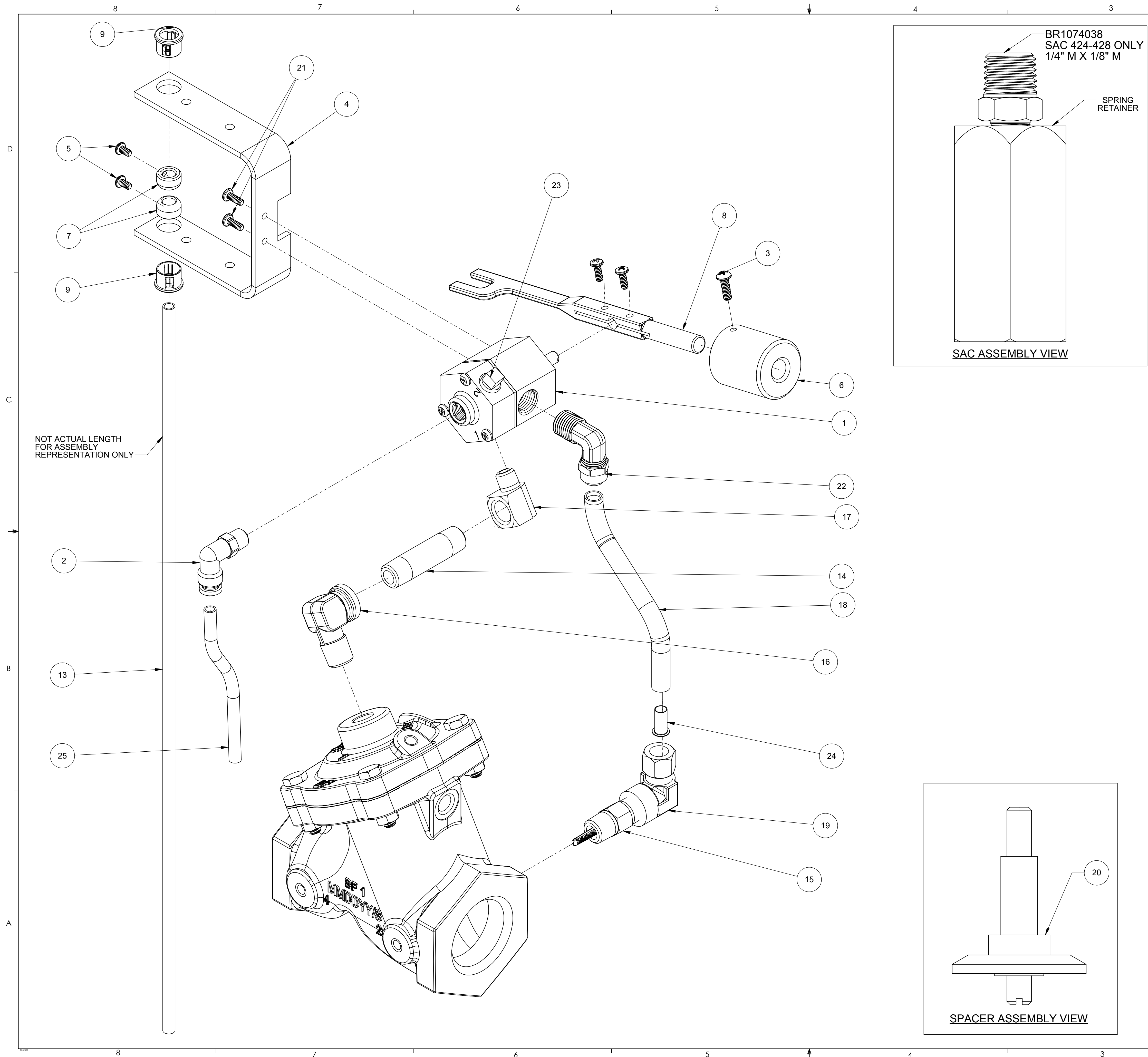
TITLE: CATALOG SHEET, 420 DAIPHAGM FLOAT OPERATED VALVES

SIZE: B DWG NO.: 1078190 REV: K

SCALE: 1:1 SHEET 5 OF 7

Buy AQ Matic.com





REVISIONS					
ZONE	ECN	REV.	DESCRIPTION	DATE	APPD
			SEE SHEET ONE FOR NOTES		

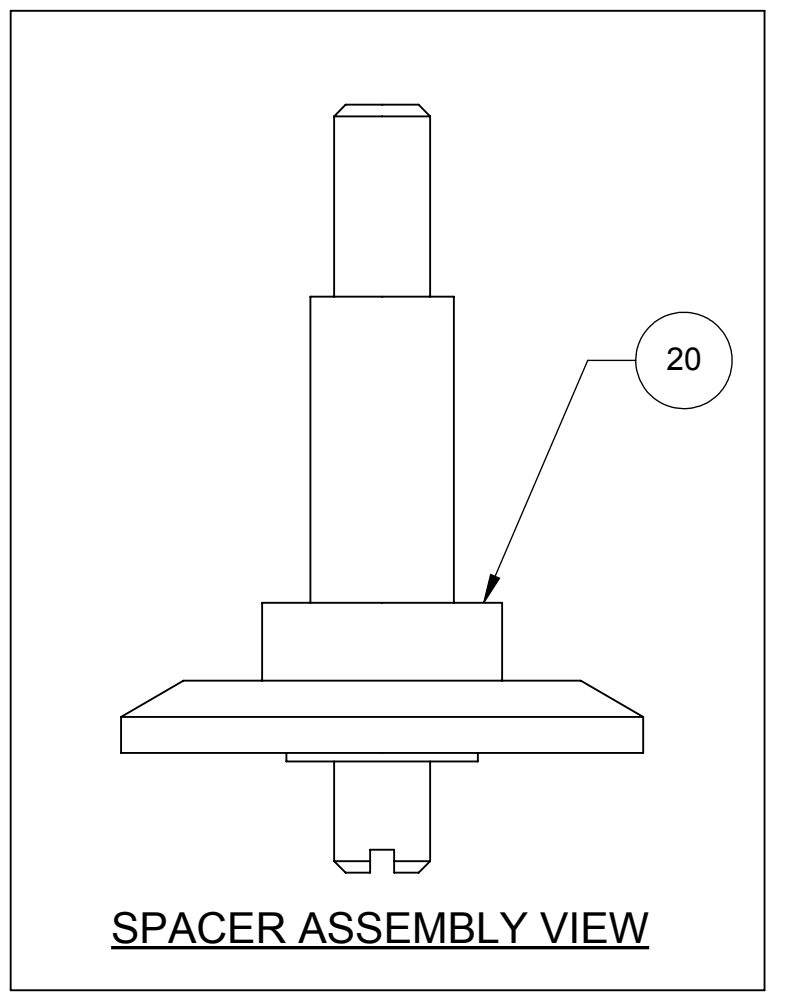
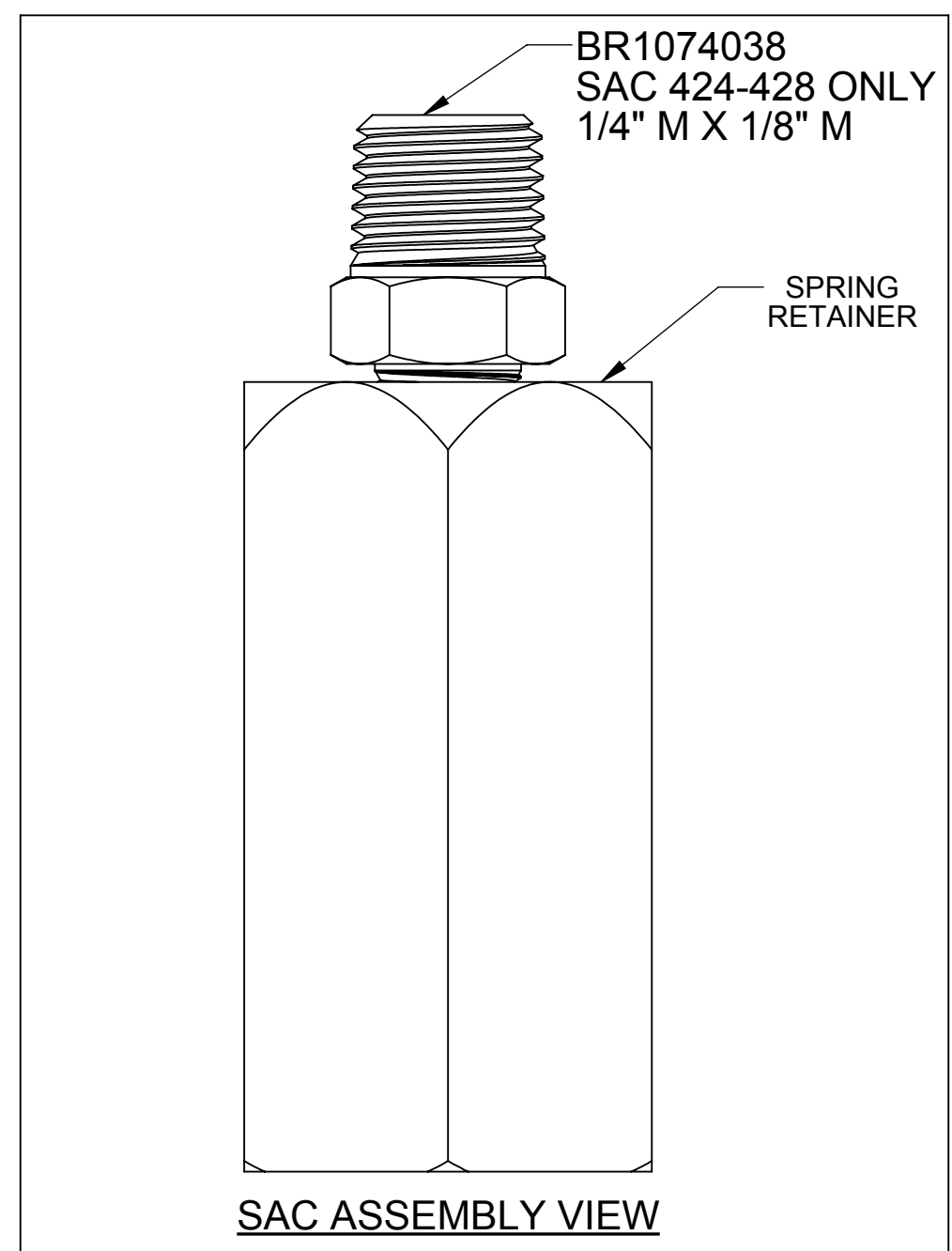
ITEM NO.	DESCRIPTION	PART NUMBER	QTY. (424-428)
1	PILOT CNTL ASSY, 348, -AE	1073992	1
2	FITTING, ELBOW,TUBE,1/8MNPT X	1078765	1
3	RD. HD. MACH SCREW, (8-32 X 1/2)	1072375	1
4	BRACKET, 348	1074012	1
5	RD. HD. MACH. SCREW, (6-32 X 1/4)	1072370	2
6	COUNTERWEIGHT, STD	1074014	1
7	CENTERING COLLAR, BRASS	1074017	2
8	LEVER, 348	1074034	1
9	BUSHING	1074016	2
10	STUD, THRD, #12-24 UNC-2A, BRASS	1074025	1
11	GREASE, LUBRIPLATE, FGL-2	16856-8	1
12	FLOAT,SAND,5"	1073996	1
13	FLOAT ROD	1074023	1
14	FITTING, NIPPLE, 1/4NPTX2,BRASS	424	1071905
	PIPE NIPPLE 1/4" X 3"	425,426	1071906
	PIPE NIPPLE 1/4" X 4"	427,428	1071907
15	STRAINER ASSY	1074004	1
16	FITTING, ELBOW,1/4 MNPT X 1/4F	1074041	1
17	FITTING, ELBOW,REDUCER,BRS	1074040	1
18	FITTING,TUBE,.37 OD	1071940	1
19	FITTING, ELBOW,TUBE 1/4FNPTX3/	1074007	1
20	SPACER, BRASS	424	1074230
		425	1074305
		426	1074385
		427	1074484
		428	1074565
21	SCREW, PHLP, PN HD	1072371	4
22	FITTING, ELBOW, BRASS	1074037	1
23	PLUG,PIPE,1/8" MNPT,BRS,SQ HD	1071903	1
24	FITTING,INSERT,3/8	10332	1
25	TUBING, POLY 1/4" O.D. X .035	1071936	1

SEE NOTE-2

PAINT OPTIONS	
PART #	COLOR
42805	RED
43198	BLUE
42807	BLACK
42808	ASH

NOTES:

1. DRILL AND TAP PORT #1 WITH 1/4" NPT. [424-428 VALVES]
2. SEE DRAWING 1078193 FOR ROD LENGTH/MATERIAL OPTIONS.
3. STANDARD VERSION 424 MODEL SHOWN.



THIS DOCUMENT IS SOLELY THE PROPERTY OF AQ Matic VALVE & CONTROLS COMPANY INC. REPRODUCTION, USE, DISCLOSURE, OR TRANSMISSION OF THIS DOCUMENT OR DETAILS CONTAINED HEREIN, IN PART OR IN WHOLE, IS PROHIBITED WITHOUT THE WRITTEN CONSENT OF AQ Matic ENGINEERING. THIS DOCUMENT AND ANY COPIES SHALL BE RETURNED TO AQ Matic UPON REQUEST.

COMPONENTS / ASSEMBLIES TO BE COMPLIANT AND COMPATIBLE WITH EUROPEAN UNION DIRECTIVE 2011/65/EC (RoHS) & REGULATION (EC)1907/2006 (REACH) REQUIREMENTS

THIRD ANGLE PROJECTION

APPROVALS	DATE
DRAWN SM	04/18/11
APPROVED	
CHECKED	

DO NOT SCALE DRAWING DIMS ARE IN INCHES (mm) INTERPRET DIMS AND TOLERANCES PER ASME Y14.5M-2009 UNLESS OTHERWISE SPECIFIED. ALL FINISHED MACHINED SURFACES 125 / OR BETTER. TOLERANCES: ANGLES: ± 1° 1 PLACE .X: ± 0.15 (0.38) 2 PLACE .XX: ± 0.1 (0.3) 3 PLACE .XXX: ± 0.05 (0.13)

TITLE: CATALOG SHEET, 420 DAIPHGRAM FLOAT OPERATED VALVES

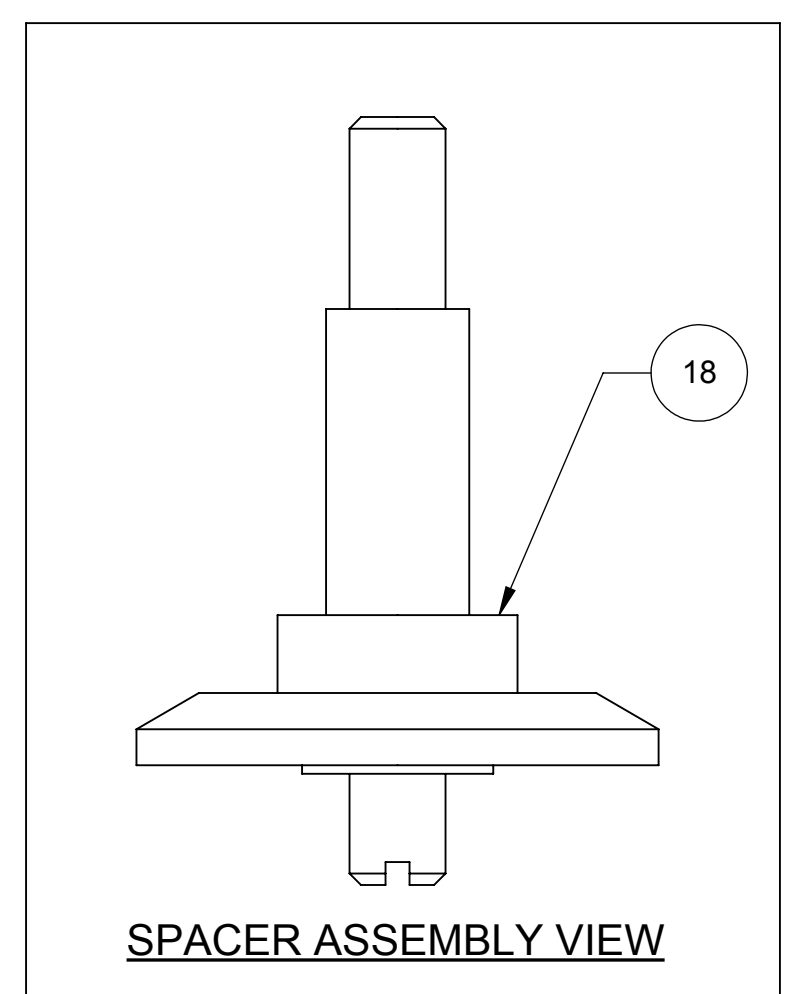
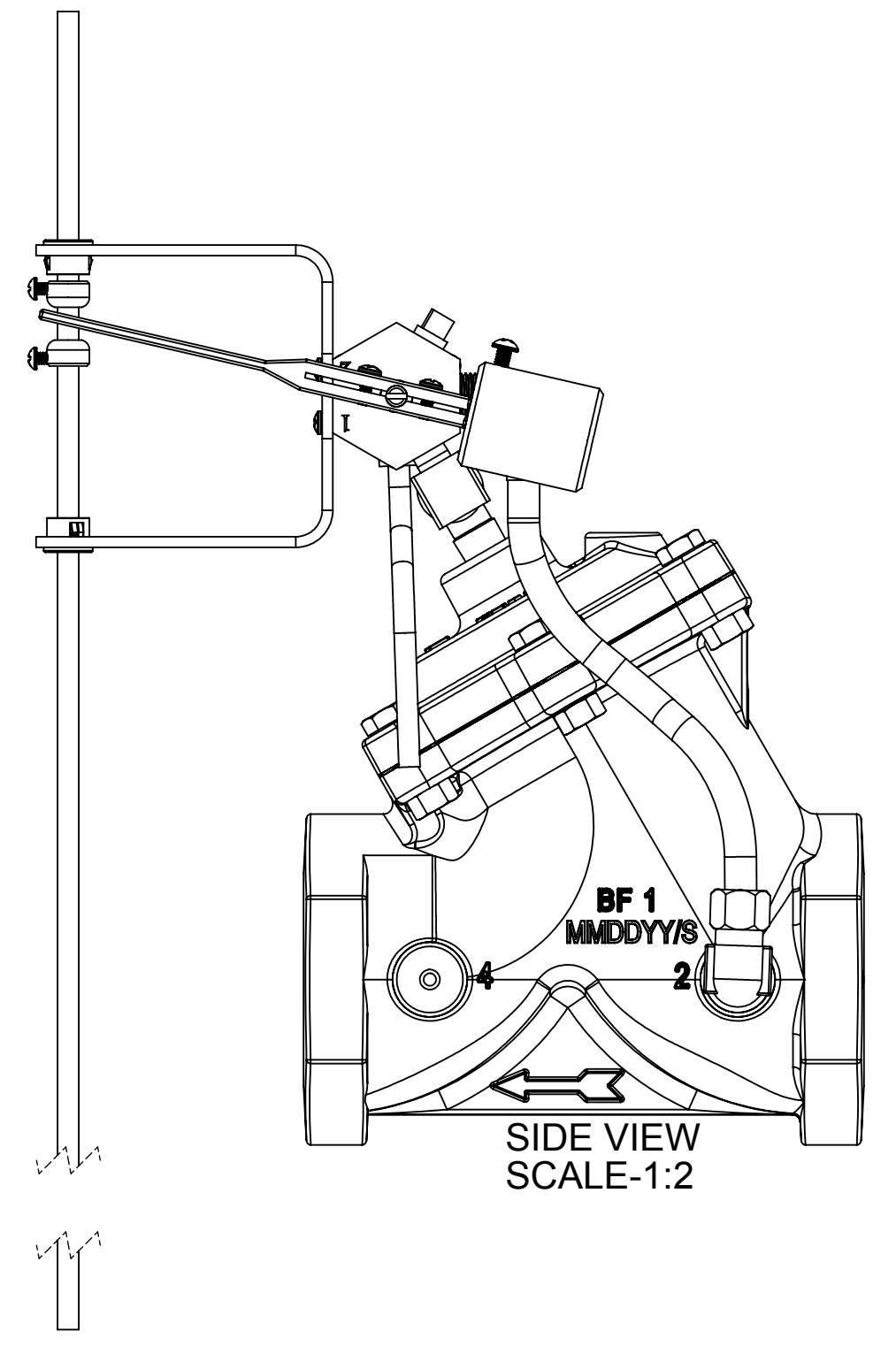
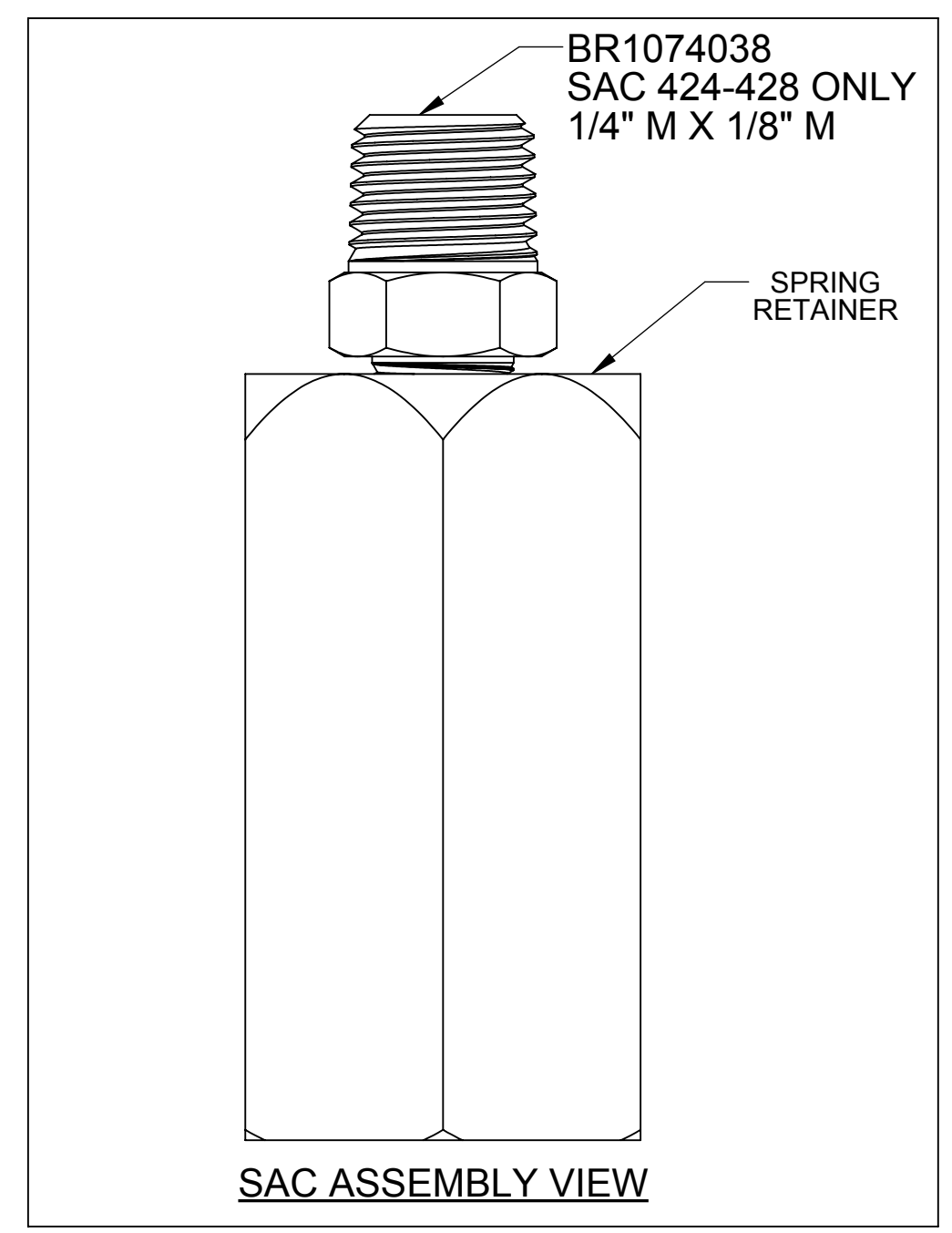
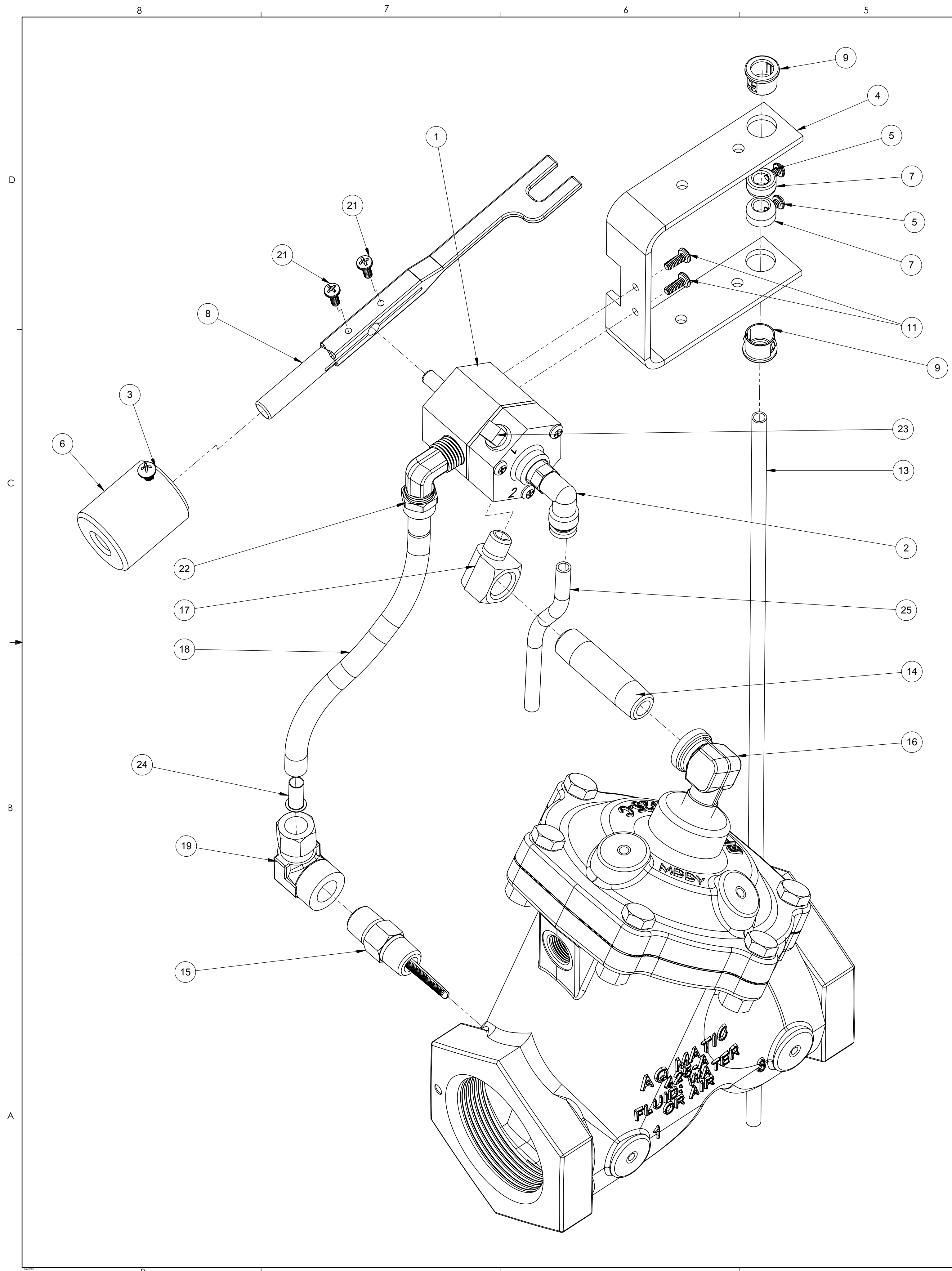
SIZE: B DWG NO. 1078190 REV K

SCALE: 1:1 SHEET 6 OF 7

STANDARD VERSION FOR 424 THRU 428 VALVES W/FLOAT

Buy AQ Matic.com





REVISIONS					
ZONE	ECN	REV.	DESCRIPTION	DATE	APPD
			SEE SHEET ONE FOR NOTES		

ITEM NO.	DESCRIPTION	PART NUMBER	QTY. (424-428) CLOSED IF LOW
1	PILOT CNTL ASSY, 348, -AE	1073992	1
2	FITTING, ELBOW, TUBE, 1/8MNPT X	1078765	1
3	RD. HD. MACH SCREW, (8-32 X 1/2)	1072375	1
4	BRACKET, 348	1074012	1
5	RD. HD. MACH. SCREW, (6-32 X 1/4)	1072370	2
6	COUNTERWEIGHT, STD	1074014	1
7	CENTERING COLLAR, BRASS	1074017	2
8	LEVER, 348	1074034	1
9	BUSHING	1074016	2
10	STUD, THRD, #12-24 UNC-2A, BRASS	1074025	1
11	GREASE, LUBRIPLATE, FGL-2	16856-8	1
12	FLOAT, SAND, 5"	1073996	1
13	FLOAT ROD	1074023	1
14	FITTING, NIPPLE, 1/4NPTX2, BRASS	424	1071905
	PIPE NIPPLE 1/4" X 3"	425, 426	1071906
	PIPE NIPPLE 1/4" X 4"	427, 428	1071907
15	STRAINER ASSY	1074004	1
16	FITTING, ELBOW, 1/4 MNPT X 1/4F	1074041	1
17	FITTING, ELBOW, REDUCER, BRS	1074040	1
18	FITTING, TUBE, .37 OD	1071940	1
19	FITTING, ELBOW, TUBE 1/4FNPTX3/	1074007	1
20	SPACER, BRASS	424	1074230
		425	1074305
		426	1074385
		427	1074484
		428	1074565
21	SCREW, PHLP, PN HD	1072371	4
22	FITTING, ELBOW, BRASS	1074037	1
23	PLUG, PIPE, 1/8" MNPT, BRS, SQ HD	1071903	1
24	FITTING, INSERT, 3/8	10332	1
25	TUBING, POLY 1/4" O.D. X .035	1071936	1

NOTES:

1. DRILL AND TAP PORT #2 WITH 1/4" NPT. [424-428 VALVES]
2. SEE DRAWING 1078193 FOR ROD LENGTH/MATERIAL OPTIONS.
3. STANDARD VERSION 425 MODEL SHOWN.

PAINT OPTIONS	
PART #	COLOR
42805	RED
43198	BLUE
42807	BLACK
42808	ASH

STANDARD VERSION  
CLOSED IF- LOW,  
CLOSED BY-PILOT PRESSURE,  
OPEN BY- VENT  
**FOR 424 THRU 428  
VALVES W/FLOAT**

COMPONENTS / ASSEMBLIES TO BE COMPLIANT AND COMPATIBLE WITH EUROPEAN UNION DIRECTIVE 2011/65/EC (ROHS2) & REGULATION (EC)1907/2006 (REACH) REQUIREMENTS

THIS DOCUMENT IS SOLELY THE PROPERTY OF AQ Matic VALVE & CONTROLS COMPANY INC. REPRODUCTION, USE, DISCLOSURE, OR TRANSMISSION OF THIS DOCUMENT OR DETAILS CONTAINED HEREIN, IN PART OR IN WHOLE, IS PROHIBITED WITHOUT THE WRITTEN CONSENT OF AQ Matic ENGINEERING. THIS DOCUMENT AND ANY COPIES SHALL BE RETURNED TO AQ Matic UPON REQUEST.

DO NOT SCALE DRAWING DIMS ARE IN INCHES (mm) INTERPRET DIMS AND TOLERANCES PER ASME Y14.5M-2009 UNLESS OTHERWISE SPECIFIED. ALL FINISHED MACHINED SURFACES 125 / OR BETTER. TOLERANCES: ANGLES: 1° 1 PLACE .X = .015 (0.38) 2 PLACE .XX = .01 (0.3) 3 PLACE .XXX = .005 (0.13)

THIRD ANGLE PROJECTION	APPROVALS	DATE
	SM	04/18/11
	APPROVED	
	CHECKED	

TITLE: CATALOG SHEET, 420 DAIPHAGM FLOAT OPERATED VALVES

SIZE: B DWG NO. 1078190 REV K

SCALE: 1:1 SHEET 7 OF 7

Buy AQ Matic.com